

PECKHAM FESTIVAL

13/14/15 SEPTEMBER 2019



FREE EVENT CELEBRATING CREATIVE & CULTURAL PECKHAM

COPELAND PARK / BUSSEY BUILDING / BLENHEIM ARCHES / PECKHAM SPRINGS / PECKHAM LEVELS

MADE IN

PECKHAM

OPEN STUDIOS

FRIDAY 13 6-9PM / SATURDAY 14 & SUNDAY 15 11AM-6PM

COPELAND PARK &
BUSSEY BUILDING



PECKHAMFESTIVAL.ORG
#PeckhamFestival #PeckhamIsOpen





MADE IN
PECKHAM
OPEN STUDIOS

16-30



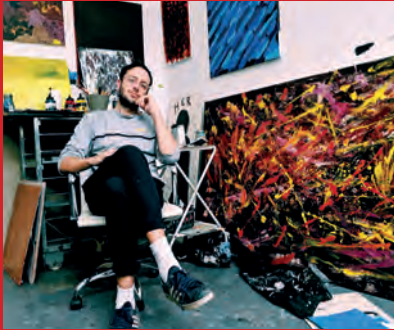
**COMMUNITY
HUB**

7



**EVENT
LISTINGS**

4



**REFLECTING
PECKHAM
II**

8



**FILM
SCREENING**

6



**FLOWER
FESTIVAL**

11

WELCOME

Peckham Festival was launched three years ago to celebrate the creativity and culture of SE15. It exists to promote the artists, makers, creators and community groups of Peckham and to forge community connections through the encouragement of local participation.

Since 2016, Peckham has truly become London's neighbourhood of reckoning. Its art scene is world-renowned.

Over 3 days, this year's Peckham Festival focuses on our thriving local artistic talent.

Open Studios features over 80 artists and creatives, taking you on a journey to discover what is 'Made in Peckham'. You'll find artists, makers and creators



across SE15 producing ceramics, sculpture, painting, screen printing, photography, fashion, jewellery, textiles, graphics, architecture and homewares. Head to page 16 to meet the makers, many of them in the intimacy of their own studios.

There are free family-friendly activities and community outreach in our Community Hub in Copeland Park. See page 7.

You can also find a range of free events including Reflecting Peckham II Exhibition, outdoor pedal-powered cinema, food traders, a flower installation, performances and talks.

The festival is 100% non-profit and in 2018 became a Community Interest Company (CIC). The scaling back of this year's festival highlights the need for a sustainable strategy going forward. We are working on a plan to involve large scale stakeholders who can help support us financially, to ensure a long term sustainable and wide-reaching community festival for years to come.

For now, thank you to this year's sponsors; Copeland Park & Bussey Building, Social, #PeckhamIsOpen and Southwark Council.

But our greatest thanks go to the creatives, businesses and volunteers who make Peckham Festival a unique community effort and without whom this event would not be possible.

WE HOPE YOU ENJOY THE FESTIVAL.



PECKHAMFESTIVAL.ORG

#PeckhamFestival #PeckhamIsOpen

THANKS

OPEN STUDIOS COORDINATOR

Jules Parker

PRODUCTION & EVENTS MANAGER

Tom Victorio-Jones

VOLUNTEER & COMMUNITY HUB MANAGER

Lisa Bruce

SOCIAL MEDIA & MARKETING

Maddie Rose Hills

DESIGN

Superfantastic

COPELAND PARK TEAM

Lorelie Wilson

Tim Wilson

Chris Wilson

Elkie Brooks

VOLUNTEERS

Thank you to all the volunteers without whom this event would not be possible.

AND SPECIAL THANKS

To our sponsors and all who've put in their time and effort to bring the festival to the streets of Peckham.

T's&C's Event details subject to change. For a full list of our T's&C's see our website www.peckhamfestival.org

YOUR SOCIAL LIFE IS SORTED FOR THE WEEKEND. AS WELL AS THE OPEN STUDIOS, HERE'S AN ARRAY OF ACTIVITIES, MOST WON'T COST YOU A PENNY. WE HAVE FILM SCREENINGS, MUSIC AND POETRY PERFORMANCES, CRAFTS, INSTALLATIONS AND MORE. HAVE A BROWSE BELOW AND GET INVOLVED.

FRIDAY

ALEX CULSHAW – THE RIPPLE
NOON–9PM / SOUTH KIOSK

PECKHAM FEST AT RYE SOCIETY
NOON–10PM / RYE SOCIETY

BUBBLES FROM BEES BONANZA
5–10PM / GOSNELLS TASTING ROOM

JAPANESE OPEN HOUSE
5–11PM / KANPAI

MADE IN PECKHAM OPEN STUDIOS
6–9PM / VARIOUS

REFLECTING PECKHAM II
6–9PM / COPELAND GALLERY

HOLDRONS FOOD YARD
6PM–LATE/ HOLDRONS YARD

CHARMPIT + MORE LIVE BANDS
7–11PM / SUPER UNISON STUDIOS



NEW GUMS AND RUTHLESS X PRESENTS
7.30–11PM / UNIT 2B COPELAND PARK

SATURDAY

ECO PRINTING WORKSHOP
10AM–3PM / 3RD RAIL PRINT SPACE

1 DAY T-SHIRT PRINTING WORKSHOP
10AM–4PM / 3RD RAIL PRINT SPACE

MADE IN PECKHAM OPEN STUDIOS
11AM–6PM / VARIOUS

HOLDRONS FOOD YARD
11AM–LATE / HOLDRONS YARD

STABLE YARD
11AM–4PM / COPELAND PARK

PRINT YOUR OWN PECKHAM FESTIVAL T-SHIRT OR TOTE BAG
11AM–4PM / 3RD RAIL PRINT SPACE

EXPERIMENT HEATPRESS WORKSHOP
11AM–4PM / 3RD RAIL PRINT SPACE

SOCIAL'S GIN & CIDER FESTIVAL
11AM–10PM / SOCIAL COPELAND PARK

COMMUNITY HUB
NOON–6PM / UNIT 2B COPELAND PARK

REFLECTING PECKHAM II
NOON–6PM / COPELAND GALLERY

ALEX CULSHAW – THE RIPPLE
NOON–6PM / SOUTH KIOSK

BUBBLES FROM BEES BONANZA
NOON–10PM / GOSNELLS TASTING ROOM

PECKHAM FEST AT RYE SOCIETY
NOON–10PM / RYE SOCIETY

JAPANESE OPEN HOUSE
NOON–11PM / KANPAI

DRIED FLOWERS – VASE ARRANGEMENT WORKSHOP
2–4PM / PRINT VILLAGE

IN PERFECT PROCESS
2–6PM / UNIT 9F COPELAND PARK

STRONG AS A MOTHER FOR MOTHERS2MOTHERS
2–6PM / THE YARD

EXTINCTION REBELLION SOUTHWARK
6–8PM / UNIT 2B COPELAND PARK

PEDAL-POWERED FILM SCREENING – BOHEMIAN RHAPSODY
8–10.15PM / COPELAND SQUARE



SUNDAY

HOLDRONS FOOD YARD
11AM–LATE / HOLDRONS YARD

SOCIAL'S GIN & CIDER FESTIVAL
11AM–9PM / SOCIAL COPELAND PARK

MADE IN PECKHAM OPEN STUDIOS
11AM–6PM / VARIOUS

COMMUNITY HUB
NOON–5PM / UNIT 2B COPELAND PARK

JAPANESE OPEN HOUSE
NOON–5PM / KANPAI

REFLECTING PECKHAM II
NOON–6PM / COPELAND GALLERY

ALEX CULSHAW – THE RIPPLE
NOON–6PM / SOUTH KIOSK

PECKHAM FEST AT RYE SOCIETY
NOON–10PM / RYE SOCIETY

DRIED FLOWERS – VASE ARRANGEMENT WORKSHOP
2–4PM / PRINT VILLAGE

IN PERFECT PROCESS
2–6PM / UNIT 9F COPELAND PARK

PRIMA QUEEN
7.30–10PM / UNIT 2B COPELAND PARK

THE EMPEROR OF ATLANTIS
7.45–8.45PM / BOLD TENDENCIES

HOLDRONS YARD, COPELAND PARK /
FRIDAY EVE • SATURDAY & SUNDAY ALL DAY



HOLDRONS FOOD YARD

MARKET

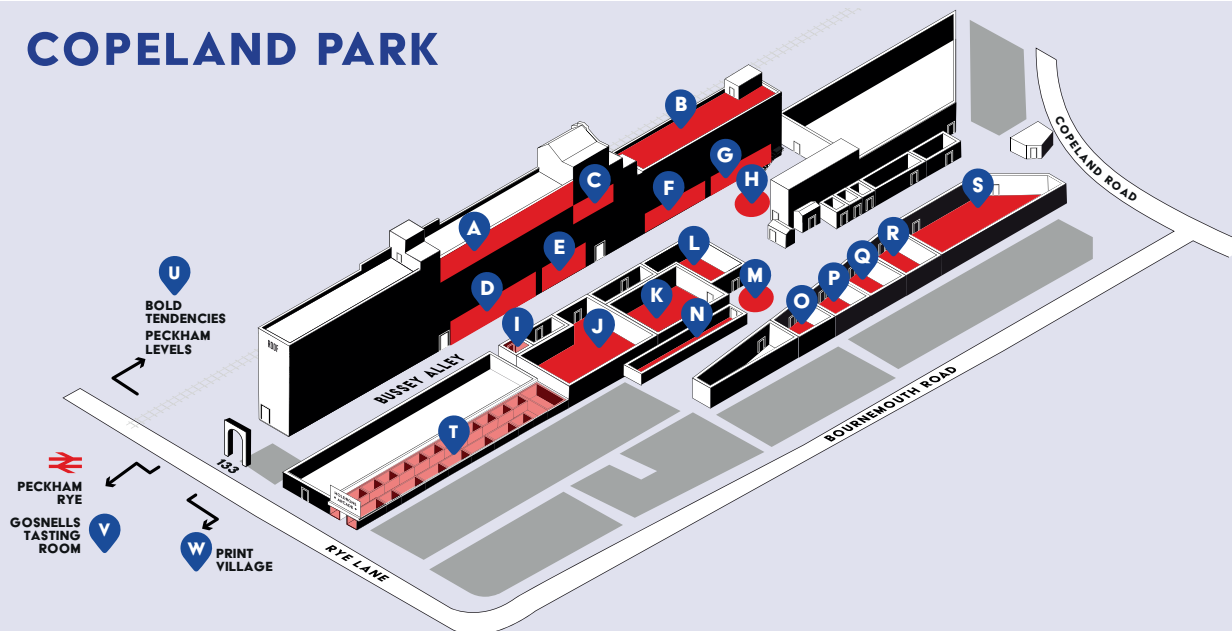


From Caribbean to Afro fusion to vegan, we're joined across the 3 days by some of SE London's best loved food traders.

Street food is an experience for everyone - whether you're adventurous or the picky eater, on the go or have time to linger and it requires no reservation or dress code. Plus, eating alfresco is social, cheerful and definitely celebratory, with no cut backs on deliciousness. Come see what's on the menu.



COPELAND PARK



- A B4 STUDIOS
- B RYE SOCIETY
- C STUDIO B3.2
- D BG STUDIOS
- E PECKHAM SOUL
- F DG STUDIOS

- G SOUTH KIOSK
- H COPELAND SQUARE
- I STUDIO 9E1
- J UNIT 9F
- K COPELAND GALLERY
- L SOCIAL

- M GIN/CIDER FESTIVAL
- N HOLDRONS FOOD YARD
- O JACOB ALEXANDER
- P COMMUNITY HUB/UNIT 2B
- Q KANPAI
- R SUPER UNISON STUDIOS

- S THE YARD/CRANK
- T HOLDRONS ARCADE
- U BOLD TENDENCIES/ PECKHAM LEVELS
- V GOSNELLS
- W PRINT VILLAGE

SUPER UNISON STUDIOS / FRIDAY 7-11PM




CHARMPIT + MORE LIVE BANDS

CHILD FRIENDLY / DROP-IN / MUSIC / PERFORMANCE



Super Unison Rehearsal Studios will be hosting a FREE night of music featuring the DIY femme punk of CHARMPIT (Everything Sucks Music, Keroleen Records) plus a hand-picked selection of gourmet musical treats from the local area.

www.superunisonstudios.com

 charmpit

COPELAND SQUARE / SATURDAY 8-10.15PM



PEDAL-POWERED FILM SCREENING BOHEMIAN RHAPSODY

CHILD FRIENDLY / DROP-IN / FILM



An outdoor, bicycle-powered screening of 'Bohemian Rhapsody'; the 2018 biographical drama about Freddie Mercury, the lead singer of the British rock band Queen; from Electric Pedals. Feel free to bring a cushion or blanket.

www.electricpedals.com

   electricpedals

UNIT 2B, COPELAND PARK / FRIDAY, SATURDAY & SUNDAY



COMMUNITY HUB

Since its inception in 2016, Peckham Festival has been championing community groups in the SE15 area, endeavouring to broaden the public's awareness of them, whilst forging community connections through participation.

Our community hub is where you can meet local action groups and get involved in a range of activities. This year's hub in Unit 2B, Copeland Park is kindly sponsored by Social.

CHILD FRIENDLY / DROP-IN / EXPERIENCE / WORKSHOP / PERFORMANCE

COMMUNITY GROUPS

**EXTINCTION REBELLION
SOUTHWARK - CLIMATE
CRISIS DISCUSSION |
EXTINCTION REBELLION**
SATURDAY / 6PM

**WOMEN'S EQUALITY PARTY
REFUGEE SOUTHWARK**



WORKSHOPS

**DEJANS POETRY -
INCORRECT RHYMES
WORKSHOP | ELMA BURKE**
SATURDAY

**LOOK UP PECKHAM
- HARU WASHI TAPE
COMMUNITY COLLAGE |
KATRINA RUSSELL-ADAMS &
JONATHAN LAWES**
SATURDAY & SUNDAY 1-3PM

**DO IT YOURSELF -
COMMUNITY DRAWING
WORKSHOP | DRAWING
PEOPLE TOGETHER & OTW**
SATURDAY

**OLD MASTER MASHUP
- POSTCARD-MAKING
WORKSHOP | DULWICH
PICTURE GALLERY**
SATURDAY & SUNDAY

**ARTISTS AGAINST ABUSE /
SUPPER CLUB @ 7**
SATURDAY & SUNDAY

**MOCKINGBIRD MAKES
- WOOLLEN POM POM
WORKSHOP**
SATURDAY & SUNDAY

**YARNACHIST - CROCHET
ACTIVIST WORKSHOP**
SATURDAY & SUNDAY

PERFORMANCES

**NEW GUMS AND RUTHLESS X
PRESENTS - LYRICAL ARTISTS
SHOWCASE**
FRIDAY 7.30PM

**SPOKEN WORD BY ELMA
BURKE**
SATURDAY 4PM

**PRIMA QUEEN PERFORMANCE
- DREAMY INDIE 4-PIECE**
SUNDAY 7.30PM



BROUGHT TO YOU BY

SOCIAL

REFLECTING PECKHAM II

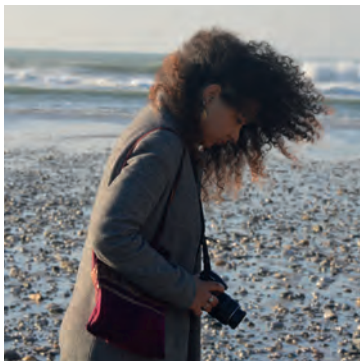
Reflecting Peckham II is an exhibit of local contemporary artists from, or inspired by, SE15; each producing distinctive and unique artwork shaped by their own history and experiences.

EXHIBIT / DROP-IN / CHILD FRIENDLY



▲ DIDO HALLET

Dido was born in Bath in 1969. She studied at Goldsmiths from 2003-6 and the Royal College of Art from 2010-13. She was in New Contemporaries in 2006 and came 3rd in the Welsh Portrait Prize in 2007. She won the Neville Burston Painting Prize in 2006. Her work is in the private collections of John Moores family, Goldsmiths College and the RCA.



▲ MIGNON NIXSON

As a mixed race artist brought up and living in Peckham, to Mignon, comfort is found in SE15's diversity and vast amount of culture. In this series however, she discovers a different lifestyle in the most rural parts of Cornwall; encountering peaceful moments by the sea. For Mignon, it is an interesting contrast to present photographs where there is so little going on, within an area of such vibrancy.



▲ MAX MIECHOWSKI

Max's portrait of Burgess Park advocates for diversity and multiculturalism. The virtue of the park lies in the people who visit it. It is a space that facilitates the coming together of ideas, cultures, and beliefs; it allows people to feel part of something and to belong somewhere. Although quiet, Miechowski's series is a subtle backlash to the increasingly polarising political rhetoric surrounding national identity – ideals which would see communities such as these changed forever.



▲ SANI SANI

An interdisciplinary artist whose artwork is inspired by his Nigerian heritage, London, the human condition, exploring the subconscious, the optics of the eyes from an artistic point of view, colours and form, and why and how they trigger feelings in humans.

Sani was born in Peckham to Nigerian parents and moved to Nigeria at the age of 6 where he lived until the age of 15.

In his 2018 solo exhibition entitled Identity, Sani expressed how having Nigerian parents, but being British, puts him in a very fortunate position and this is what created the formula for his subject matter; process and style of expression.



▲ MARK PEARSON

Mark is a figurative painter who specialises in the urban landscape. For the past decade or so he has concentrated on London and in particular Peckham, portraying the people, places, and the massive changes that continue to affect those who live and work here. Having first shown his work on this subject in 'Reflecting Peckham' 2016, he is delighted to be part of the exhibition again this year.

New for this exhibition Mark is showcasing large works on recycled cardboard.

SOCIAL, COPELAND PARK / SATURDAY & SUNDAY 11AM-10PM



SOCIAL'S GIN AND CIDER FESTIVAL

DROP-IN / EXPERIENCE / MARKET



Social, a bar in the heart of Peckham's creative community, are excited to be part of Peckham Festival. They are bringing Craft Cider and Boutique Gin pop-up bars to Copeland Park, with face painters, magicians and food from SEND NOODS to keep all the family happy.

Over in Unit 2B is the Community Hub area of the Festival that Social and Rye Society are proudly sponsoring. It's a weekend not to be missed.

www.copelandsocial.com

[copelandsocial](https://www.instagram.com/copelandsocial)



RYE SOCIETY, BUSSEY BUILDING / FRIDAY, SATURDAY & SUNDAY



PECKHAM FEST AT RYE SOCIETY

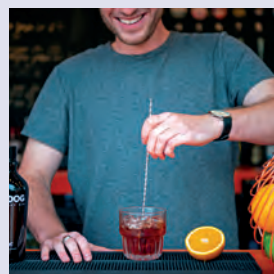
CHILD FRIENDLY / DROP-IN / EXPERIENCE



Rye Society boasts a rooftop view of the hustle and bustle of Peckham Festival. They are pulling out the stops to bring a packed weekend of partying. See you on the roof!

www.ryesociety.co.uk

[ryesocietyse15](https://www.instagram.com/ryesocietyse15)
 [ryesocietypeckham](https://www.facebook.com/ryesocietypeckham)



FRIDAY / 12 NOON-10PM

► BASS & TIME

A journey through **Bass & Time** from the festival, club and pub rocker **Clan Dextine**, spinning swing to ska, blues to Balkan, roots to rave • **Happy Hour** 6pm-8pm, **street food** until late.

SATURDAY / 12 NOON-10PM

► THE PECKHAM ROOFTOP AUTUMN FAIR

Alice and the Percolators bring the sounds of New Orleans with a live set 3pm-5pm • **The Gin Den** - Local South London Gins aplenty, Gin cocktails and bespoke Gin & Tonics • **Win big** on classic carnival games • **Happy Hour** 5pm-7pm, **street food** until late.

SATURDAY / 12 NOON-10PM

► THE SUNDAY SHOWDOWN

The sounds of the Deep South from **Alice and the Percolators** 3pm-5pm • **Clan Dextine** on the decks • Experience the tastes of Kentucky at **The Bourbon Shack**; serving up Bourbon-based cocktails and smoked BBQ food.

GOSNELLS TASTING ROOM / FRIDAY 5–10PM • SATURDAY NOON–10PM 

BUBBLES FROM BEES BONANZA

DROP-IN / EXHIBIT / EXPERIENCE / WORKSHOP



FROM BEE TO BOTTLE – Only the finest honey is used to create our unique, lightly sparkling modern mead. Naturally made in London. Come and join us at the Gosnells Tasting Room for a weekend of fun!

FRIDAY / ROLL THE DICE AND PAY THE PRICE

Roll the dice and pay what you roll for a 75cl bottle of Gosnells – £3 to £18

SATURDAY / FREE BREWERY TOUR OF GOSNELLS AT 1PM & 3PM

Visit our brewery/meadery and learn more about Gosnells, mead, and why we're unique.

We will also have an art exhibition to view at the Tasting Room all weekend.

GOSNELLS
OF LONDON

Gosnells Tasting Room, 11a Station Way SE15 4RX

www.gosnells.co.uk

   [gosnellsmead](https://www.facebook.com/gosnellsmead)



ALEX CULSHAW + THE RIPPLE

DROP-IN / EXHIBIT / FILM

SOUTH KIOSK, UNIT DG.1, BUSSEY BUILDING

FRIDAY NOON–9PM • SATURDAY & SUNDAY NOON–6PM

South Kiosk is pleased to present The Ripple by Alex Culshaw, guest curated by Corelli Hotel. The Ripple is a short film based around concepts of collective storytelling and mass hysteria, focusing on the 2015 incident in which 40 children simultaneously became ill at Outwood Academy in Ripon, North Yorkshire.

www.southkiosk.com

 [southkiosk](https://www.instagram.com/southkiosk)  [southkiosk](https://twitter.com/southkiosk)  [southkioskarts](https://www.facebook.com/southkioskarts)

◀ THE EMPEROR OF ATLANTIS

FILM / £ PAID EVENT

BOLD TENDENCIES, 7TH–10TH FLOORS MULTI-STOREY CAR PARK, 95A RYE LANE, SE15 4ST

SUNDAY 7.45–8.45PM

Written in Terezín concentration camp in 1943, ATLANTIS is a defence of the human right to a dignified life and death. The plot follows a crazed Emperor, who declares a war that can only end with no survivors. Loud Crowd rereads the piece as both an historical document, and a prophecy for our time.

By Viktor Ullmann & Petr Kien

www.loud-crowd.co.uk



JAPANESE OPEN HOUSE ▶▶

CHILD FRIENDLY / DROP-IN / PRE-BOOK / EXHIBIT
EXPERIENCE / MUSIC / PERFORMANCE / TALK / WORKSHOP
KANPAI BREWERY + TAPROOM, COPELAND PARK
FRIDAY 5-11 PM • SATURDAY NOON-11 PM • SUNDAY NOON-5 PM

Join one of our Japanese-inspired workshops where you can experience how sake is brewed, make your own miso or learn how to serve the perfect cup of matcha tea.

We are hosting a series of workshops throughout the weekend visit our website for the full listings www.kanpai.london/ peckhamfestival

www.kanpai.london

   [kanpailondon](https://www.facebook.com/kanpailondon)



◀ DRIED FLOWERS – VASE ARRANGEMENT WORKSHOP

PRE-BOOK / £ PAID EVENT
LABOOS FLOWERS, 29, UNIT 10,
PRINT VILLAGE CHADWICK ROAD SE15 4PU
SATURDAY & SUNDAY 2-4PM

Working in hand-dried flowers & foliage, you will create your very own unique arrangement that lasts forever!

Peckham-based florist studio creating sculptural, textured, one-off designs with massive pops of flowery girly-ness.

www.laboosflowers.com

 [laboosflowers](https://www.instagram.com/laboosflowers)



UNIT 9F COPELAND PARK / SATURDAY & SUNDAY 2-6PM

IN PERFECT PROCESS LISA KING LONDON X LONDON FLOWER SCHOOL

CHILD FRIENDLY / DROP-IN / EXHIBIT / EXPERIENCE



Print artist Lisa King and London Flower School launch their first collaborative collection that questions the notion of beauty and imperfection in nature and humanity, through the medium of print and floristry. The exhibition showcases the process of the creative journey, culminating in a large-scale flower and print installation.

www.londonflowerschool.com

 [londonflowerschool](https://www.instagram.com/londonflowerschool)

 [ldnflowerschool](https://twitter.com/ldnflowerschool)

 [londonflowerschool](https://www.facebook.com/londonflowerschool)





ECO-PRINTING WORKSHOP

PRE-BOOK / WORKSHOP / £ PAID EVENT
3RD RAIL PRINT SPACE
107 PECKHAM LEVELS, 95A RYE LANE, SE15 4ST
SATURDAY 10AM-3PM



Using flowers, leaves and botanical extracts, you'll create pattern on fabric through the process of binding and steaming. A length of silk is provided along with smaller samples of cotton and wool. You'll leave with the knowledge to continue experimenting at home, along with the length of eco-printed silk to make into a project of your choice.

www.stemwellworkshop.co.uk

 [stemwell_workshop](https://www.instagram.com/stemwell_workshop)  [stemwellworkshop](https://www.facebook.com/stemwellworkshop)

135A RYE LANE SE15 4ST

HOLDRONS ♦ ARCADE ♦

PECKHAM'S
INDEPENDENT
MARKET




VEGAN CAFÉ ♦ VINTAGE FASHION
AFRICAN FABRICS ♦ JEWELLERY
TAILORING ♦ SPORTS MASSAGE
COMMUNITY OUTREACH ♦ MUSIC
HAIR SALON ♦ HEALTH FOODS
INDEPENDENT FASHION ♦ GALLERY

   @HOLDRONSARCADE
HOLDRONSARCADE.COM

Our adult learning service

Your choice for local adult and
family learning

Whether you're interested in arts and crafts,
fitness, improving your English and maths or
computing skills, we have something for you...
please visit our website for further details.

 www.southwark.gov.uk/adultlearning
 adult.learning@southwark.gov.uk
 020 7358 2100



 @lb_southwark  [facebook.com/southwarkcouncil](https://www.facebook.com/southwarkcouncil)



THE STABLE YARD

PUBLIC ENGAGEMENT SESSION ON LANDSCAPING

**HAVE
YOUR SAY**

AT PECKHAM FESTIVAL
SATURDAY 14TH SEPTEMBER

The local community got behind a vision for new network of public spaces along and around the railway line between Rye Lane and Queens Road with the publication of the Peckham Coal Line feasibility study in 2018.

As developers working with one of the key sites along the route, we are excited to work with the residents and local businesses to turn that vision into reality at The Stable Yard.

We want to harness the hard work of residents, the friends of the Peckham Coal Line, local businesses, councillors and the local MP to deliver the first part of the route. We will transform The Stable Yard into

an exciting mixed-use, housing and commercial space scheme. And we want you to be part of making it happen.

We are Picfare Homes and together with our design team we will - with support from the friends of the Peckham Coal Line - be redeveloping The Stable Yard, set to be delivered in 2020.

We will be at Copeland Park during the Peckham Festival. We want you to come along and have your say. We are calling on residents and local businesses to share your ideas to come along to discuss and debate design ideas.

 PeckhamSy – Check our Twitter feed for regular updates.

 **PICFARE HOMES**



**HOLDEN
HARPER**
Architects | Engineers

PECKHAM
LEVELS

£5
LUNCH
DEAL



CHOOSE FROM NANDINE, HERMANOS TACOS HOUSE,
ZEPHYR BURGERS, OTHER SIDE FRIED & HAO HAO CHI

MONDAY - FRIDAY
12PM - 4PM

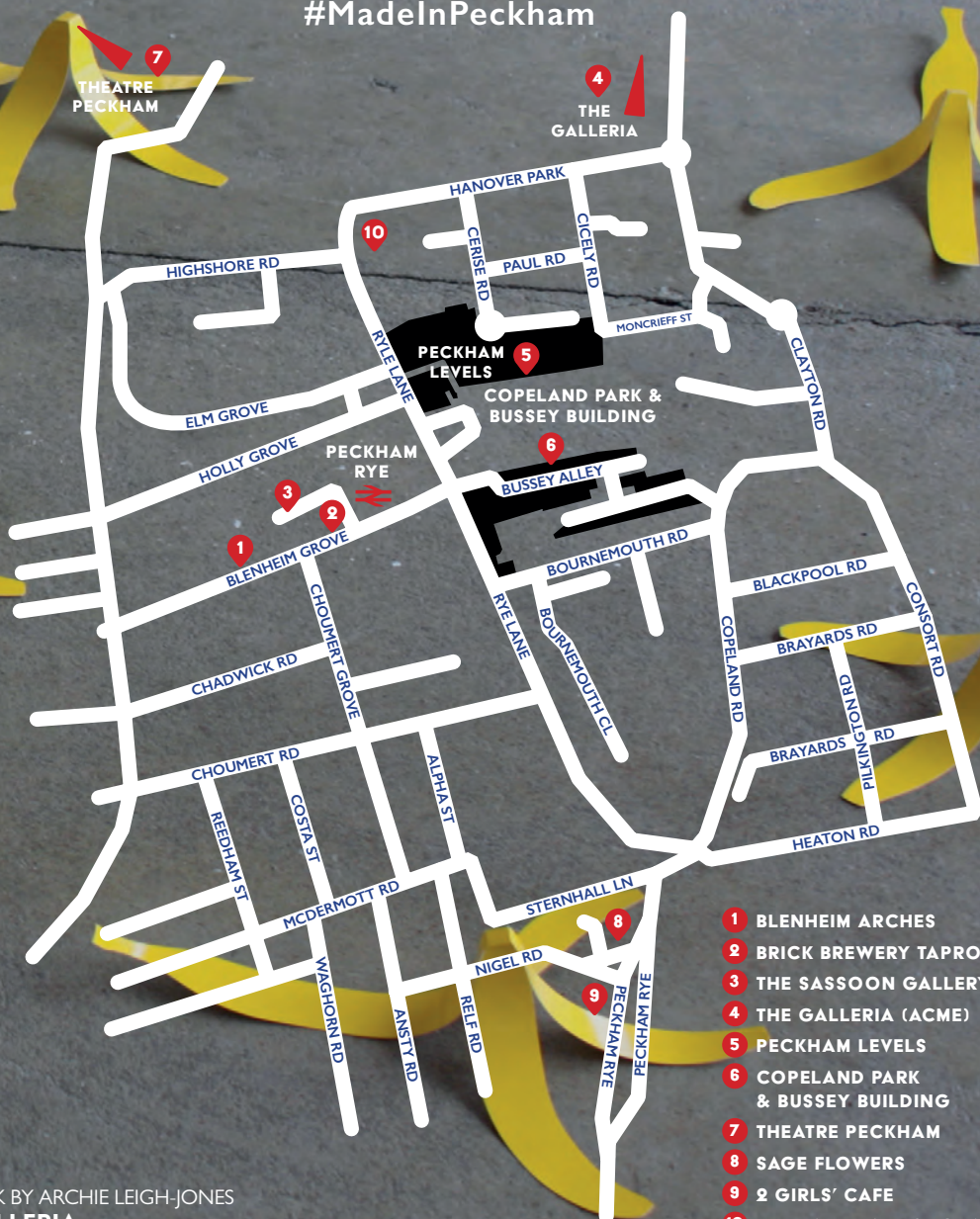
**MAKE
TIME
TO
SWEAT**

CRANK

MADE IN PECKHAM OPEN STUDIOS

Peckham has been a fixture on London's art scene since the early 2000s, and has become one of the country's most important art hubs. Through Open Studios, you can meet the makers of this special postcode in the intimacy of their studios as they open their doors to the public.

#MadeInPeckham



- 1 BLLENHEIM ARCHES
- 2 BRICK BREWERY TAPROOM
- 3 THE SASSOON GALLERY
- 4 THE GALLERIA (ACME)
- 5 PECKHAM LEVELS
- 6 COPELAND PARK & BUSSEY BUILDING
- 7 THEATRE PECKHAM
- 8 SAGE FLOWERS
- 9 2 GIRLS' CAFE
- 10 RYE LANE BAPTIST CHAPEL

THE ARCHES STUDIOS

CRAFT / CERAMICS / JEWELLERY

BLenheim ARCHES, 48-50 BLenheim GROVE SE15 4QL

SATURDAY & SUNDAY 11AM-6PM

A hidden creative oasis tucked into the brickwork of Peckham Rye railway, The Arches Studios community welcomes you to their open weekend. Their theme is 'The Arches in Bloom'; visit to wander through their studios, view original artworks and crafts, chat with artists and makers, relax in the sunshine and enjoy their bloomin' lovely studio plants. Participating makers include Bare Design London, Debbie Randall, Emma Fenelon, Georgina Corrie, Isabelle O'Carroll, Jane Muir, Jelena Belgrave and Sara Brouwer.

www.thearchesstudios.co.uk

 thearchespeckham  arches_studios  archesstudios



HELEN JOHANNESSEN

CERAMICS

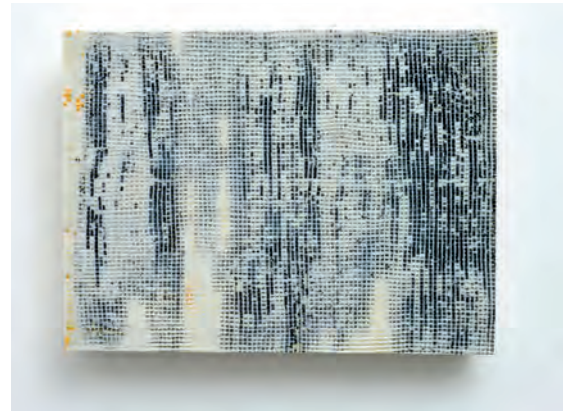
BRICK BREWERY TAPROOM, BLenheim GROVE SE15 4QL

FRIDAY 6-9PM • SATURDAY & SUNDAY 11AM-6PM

Helen works with fine porcelain surface qualities and sculptural form; illusionary and graphical aesthetics in clay. She is influenced by her exploration of perception, physical and optical shifts between 2D and 3D. Her ceramics acknowledge our digital age, achieving a sense of pixilation with casting, texture and clay screen printing techniques. Enjoy Textures of Time: London wall installation with a local beer!

www.helenjohannesen.co.uk

 helenjohceramics  helenjceramics  helenjohceramics



ELLIOT FOX

MIXED MEDIA

THE SASSOON GALLERY, PECKHAM SPRINGS

4-5 DOVEDALE TRADING ESTATE SE15 4QN

FRIDAY 6-9PM • SATURDAY 11AM-6PM

ALTERA presents a solo exhibition by artist Elliot Fox. The motifs of Fox's works are a product of their environment. The materials – taken from the industrial heartland of South London – 'reflect the setting in which the ideas for the work were originally conceived'.

www.elliottfox.co.uk

 elliot_fox



4 THE GALLERIA

FINE ART / MIXED MEDIA/SCULPTURE

10 PENNACK ROAD SE15 6DF

SATURDAY & SUNDAY 11AM-6PM

About 20 artists, working in a variety of media, will be opening up their studios. You can see mini-shows, installations and work in progress. Enjoy coffee and freshly baked bread and jam, on the house, after your brisk walk to reach them!

The Galleria, built in 2005, is part of a pioneering project by ACME studios to provide affordable, purpose-built, artist-workspaces at the locations of residential housing developments. The Galleria was part-funded by the Arts Council and opened by David Lammy MP. Altogether, 50 artists have been provided with self-contained studios at The Galleria.

www.galleriaartists.wordpress.com

Suzanne Baker

Helen Barff

Sooz Belnavis-Abbott

Andrea Carr

Jack Duplock

Brian D Hodgson

Archie Leigh-Jones

Julian Lowe

Maya Ramsay

Keith Roberts

Terry Ryan

Julian Sharples

Isa Suarez

Graham Tunnadine

Francis Wardale



5 RED, ROLLED & SEEN PHOTOGRAPHY COLLECTIVE

PHOTOGRAPHY

COMMUNITY SPACE, LEVEL 5, PECKHAM LEVELS

95A RYE LANE SE15 4ST

FRIDAY 6-9PM • SATURDAY & SUNDAY 11AM-6PM

Red, Rolled & Seen is a social documentary community photography collective based in Peckham. They are a supportive and inclusive community of local photographers, creating work and photography events in and around the local area. Visit their festival community exhibition, photography stall and pop-up portrait studio.

redrolledseen2019.eventbrite.com

[redrolledandseen](https://www.instagram.com/redrolledandseen)

JOHN YABRIFA

PHOTOGRAPHY

COMMUNITY SPACE, LEVEL 5, PECKHAM LEVELS

95A RYE LANE SE15 4ST

FRIDAY 6-9PM • SATURDAY 11AM-6PM

Water's Edge is an ongoing project by John Yabrifa. It celebrates the raw and natural beauty seen at our coastlines and lakes. From calm meditative peace at a waterfall, to raging storms at high tide; John hope to express the unique elements of the water's Edge in his images.

www.johnyabrifa.com

[jyabrifa_photography](https://www.instagram.com/jyabrifa_photography) [johnny_yabs](https://twitter.com/johnny_yabs)



3RD RAIL PRINT SPACE »

PRINTMAKING

107 PECKHAM LEVELS, 95A RYE LANE SE15 4ST

FRIDAY 6-9PM • SATURDAY & SUNDAY 11AM-6PM

3rd Rail Print Space is London's biggest open access screen printing studio combining paper, fabric and t-shirt printing with desk spaces and frequent workshops and courses. They also offer student discounts and are an ink and film supplier.

Over the festival weekend they will be showcasing all of their members' screen printed prints and products.

www.3drailprintspace.co.uk

 3drailprintspace  3drailprintspace  3rdRailPrintSpace



3RD RAIL PRINT SPACE /WORKSHOPS

SATURDAY / 10AM-3PM

» **MEET THE MAKER** - STEMWELL WORKSHOP
ECO PRINTING AND BUNDLE DYEING
£75 per person

SATURDAY / 10AM-4PM

» **1 DAY T-SHIRT PRINTING WORKSHOP**

£65 per person

50% OFF for the first 5 people to book – use code 3rpf50 when booking

SATURDAY / 11AM-4PM

» **MEET THE MAKER** - NICOLE LINE
EXPERIMENTAL HEAT PRESS WORKSHOP
WORKSHOP 1: SUBLIMATION PRINTING 10-11.30AM
WORKSHOP 2: METALLIC FOILING 12PM-1.30PM
WORKSHOP 3: FLOCKING 2.30PM-4PM
£25 per person / per workshop

SATURDAY & SUNDAY / 11AM-4PM

» **PRINT YOUR OWN PECKHAM FESTIVAL T-SHIRT OR TOTE BAG**

DROP-IN SESSIONS

£10 per adult / £5 per child

TO BOOK A WORKSHOP PLEASE GO TO:
3DRAILPRINTSPACE.CO.UK/WORKSHOPS/

PECKHAM LEVELS

DRINK, EAT, PLAY, WORK, MAKE, CREATE.

Free monthly events for all ages.



@PECKHAMLEVELS



/PECKHAMLEVELS



PECKHAMLEVELS.ORG

Levels -1 to 6, Peckham Town Centre Carpark, 95A Rye Lane, London, SE15 4ST

MADE IN PECKHAM • OPEN STUDIOS



6 AURA QUE

FASHION / TEXTILES
STUDIO BGM (B STAIRS GROUND FLOOR)
BUSSEY BUILDING
FRIDAY 6-9PM • SATURDAY & SUNDAY 11AM-6PM

Every AURA QUE product is designed in Peckham and developed directly with charity and fair trade producer groups in Nepal using traditional skills and local materials, aiming to create opportunities for the people who make our products.
www.auraque.com

auraque auraque auraqueaccessories

6 DAVID J EAST >>

FINE ART
STUDIO BGF (B STAIRS GROUND FLOOR)
BUSSEY BUILDING
FRIDAY 6-9PM • SATURDAY & SUNDAY 11AM-6PM

Abstract expressionist paintings from Filmmaker and Photographer – David J East

www.davidjeast.com

daveast daveast



6 CAMPBELL CADEY

ARCHITECTURAL DESIGN
STUDIO BGK (B STAIRS GROUND FLOOR) BUSSEY BUILDING
FRIDAY 6-9PM • SATURDAY & SUNDAY 11AM-6PM

Campbell Cadey are an architecture practice with real passion for creating amazing, unique and joyful places for living.

www.campbellcadey.com

campbellcadey



6 ANDREW CADEY

DRAWING / ILLUSTRATION
STUDIO BGK (B STAIRS GROUND FLOOR) BUSSEY BUILDING
FRIDAY 6-9PM • SATURDAY & SUNDAY 11AM-6PM

Andrew's interest in drawing is symbiotic with his career as an architect. His eye has always led him towards the sometimes incidental relationships between building styles, the quirks of adaption and change that have occurred over a building's life, these small but fascinating details of taste, utility, composition and scale.

www.andrewillustrates.com

andrewcadey



▲ JUST TRADE

JEWELLERY / SILVERSMITHING

STUDIO BGH (B STAIRS GROUND FLOOR) BUSSEY BUILDING
FRIDAY 6–9PM • SATURDAY & SUNDAY 11AM–6PM

Beautifully designed, fair trade jewellery and accessories. By combining traditional craft skills with expertise in contemporary design Just Trade produce unique characterful collections that sell internationally.

www.justtrade.co.uk

justtradeuk justtradeuk justtradeuk



▲ EMILE RAFAEL

FINE ART

STUDIO BGF (B STAIRS GROUND FLOOR) BUSSEY BUILDING
FRIDAY 6–9PM • SATURDAY & SUNDAY 11AM–6PM

Emile Rafael is a filmmaker and a painter. With his paintings, he studies abstract portraits to express inner emotional landscapes. As a filmmaker he directs music videos, commercials and is currently working on a long-form project.

www.helloemile.com

helloemile



◀ SERENA KATT

DRAWING / ILLUSTRATION

STUDIO B4D (B STAIRS 4TH FLOOR) BUSSEY BUILDING
FRIDAY 6–9PM • SATURDAY & SUNDAY 11AM–6PM

Serena Katt is an illustrator and artist, working with narrative illustration, pencil drawing and collage. Her work explores her own relationship to history, and is often created in response to archive photography and personal testimony. Her first graphic novel, 'Sunday's Child', was published by Jonathan Cape earlier this year.

www.serenakatt.co.uk

serena_j_katt

MARK PEARSON ▶▶

FINE ART

STUDIO B4P (B STAIRS 4TH FLOOR) BUSSEY BUILDING
SATURDAY & SUNDAY 11AM–6PM

Contemporary figurative painting with the key elements of light, space and movement. Mark's subject is predominantly the changing London skyline, and in particular focusing on the changing nature of Peckham. He works in oils, acrylics & ink and also has a selection of limited-edition prints.

www.markpearsonartist.com

markpearsonart markpearsonart





◀ BINE ROTH

JEWELLERY / SILVERSMITHING

STUDIO B4D (B STAIRS 4TH FLOOR) BUSSEY BUILDING

FRIDAY 6-9PM • SATURDAY & SUNDAY 11AM-6PM

6

Originally trained in jewellery design in Germany, Bine holds an MA in Textiles Mixed Media (RCA) where she started combining these two specialities. Her talent lies in combining traditional materials with contemporary techniques. Bine has a profound knowledge of craft and materials, whilst using new technologies as a research method and inspiration to design pieces. Most of her designs are characterised by a combination of strong shapes and a serene lightness of movable chains which allow the designs to dance on the body.

www.binerothjewellery.com

binerothjewellery binerothjewellery



PIPKIN & CO ▶▶

HOMEWARES / INTERIORS

STUDIO B4B (B STAIRS 4TH FLOOR) BUSSEY BUILDING

FRIDAY 6-9PM • SATURDAY & SUNDAY 11AM-6PM

6

Contemporary scented soy wax candles with a Danish twist.

www.pipkinandco.com

pipkinandco pipkinandco

JONATHAN LAWES ▶▶

PRINTMAKING

STUDIO B4Q (B STAIRS 4TH FLOOR) BUSSEY BUILDING

FRIDAY 6-9PM • SATURDAY & SUNDAY 11AM-6PM

6

Jonathan creates prints with a distinctly graphic edge, reflecting his love of geometry and pattern. Working in a loose, organic way, abstract compositions are created and developed over time. He has a keen eye for colour and layering techniques, masking some areas off, while revealing flashes of colour in others.

www.jonathanlawes.com

jonathanlawes jonathanlawesdesign



KATRINA RUSSELL-ADAMS

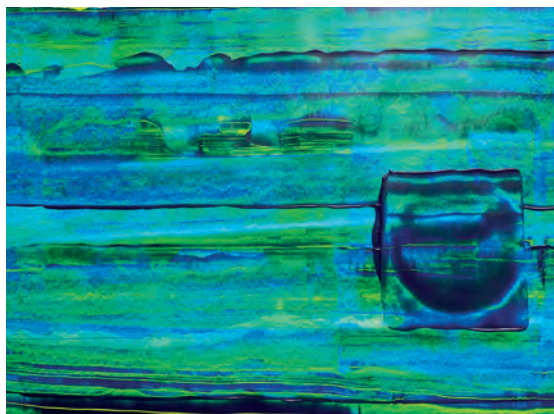
MIXED MEDIA

STUDIO B4Q (B STAIRS 4TH FLOOR) BUSSEY BUILDING

FRIDAY 6-9PM • SATURDAY & SUNDAY 11AM-6PM

6

Katrina's practice is deeply informed by the joyful clash of diversity, shapes and people and places in her surroundings. Her playful work has emerged onto the streets and galleries of her native Peckham. Her work has flourished further afield too, with public and private commissions for prints, murals and sculpture.

www.katrinarusselladams.com
[katrinaradams](#) [katrinaradams](#)


KATE PARKIN

DRAWING / ILLUSTRATION

STUDIO B4K (4TH FLOOR) BUSSEY BUILDING

FRIDAY 6-9PM • SATURDAY & SUNDAY 11AM-6PM

6

Kate's illustration work is a combination of printing, ink washes, drawn line and collage. Kate is happy to turn her hand to book illustrations, editorial work or one-off prints. Inspiration comes from the everyday to some of the rich cultural influences around her within her south London environment, with the odd whimsical twist thrown in here or there.

www.kvparkinillustration.com
[kvparkin](#)


ELEANOR STREET

PAINTING / PRINTMAKING

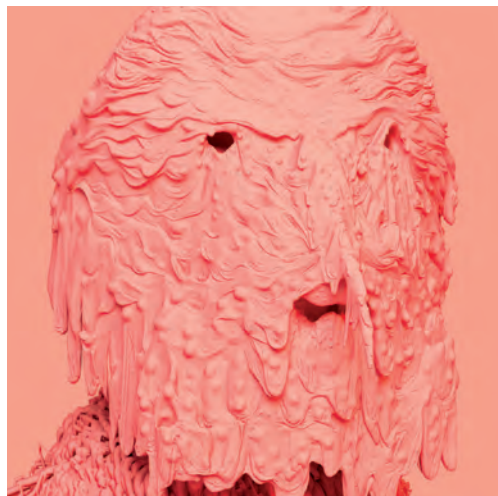
STUDIO B4K (4TH FLOOR) BUSSEY BUILDING

FRIDAY 6-9PM • SATURDAY & SUNDAY 11AM-6PM

6

Through experimentation and discovery, Eleanor allows for randomness and elements of the unexpected in her work in painting and printmaking. She is interested in how colour, texture and layering can clarify and reveal detail, as well as obscure and conceal.

www.eleanorstreet.net
[estreetscar](#)

▲ PETER THE ROMAN

MIXED MEDIA

STUDIO B4B (B STAIRS 4TH FLOOR) BUSSEY BUILDING

FRIDAY 6–9PM • SATURDAY & SUNDAY 11AM–6PM

Lots of bloated heads melting, floating limbs and general strangeness.

www.peterroman.co.uk

peterromanart



▲ BRYONY RUMBLE

CRAFT

STUDIO B3.2 (C STAIRS 3RD FLOOR) BUSSEY BUILDING

SATURDAY & SUNDAY 11AM–6PM

Bryony trained as a Cordwainer and Costume and Puppet designer at The London College of Fashion, and works widely in costume props, puppets and soft furnishings for opera, theatre, tv, film, events and for private clients.

www.bryonyrumble.co.uk

bryonyrumbledesigns bryonymumble



◀ BOB STONE

FINE ART

STUDIO B3.2 (C STAIRS 3RD FLOOR) BUSSEY BUILDING

FRIDAY 6–9PM • SATURDAY & SUNDAY 11AM–6PM

Bob is showing paintings inspired by Languedoc and a series of compositions, 'Suspended States of Being'. It's not representation that he seeks, rather an experience transmitted through the act of painting. The onlooker is confronted by decisions, they are asked to respond by feeling their physical realisation of mass, colour and form.

HAMLEY JENKINS ▶▶

FINE ART / ILLUSTRATION / PRINTS

STUDIO B3.2 (C STAIRS 3RD FLOOR) BUSSEY BUILDING

SATURDAY & SUNDAY 11AM–6PM

Hamley, Sketch Artist for Wilderness Festival for 5 years, is currently the artist in residence at Jazz Live at the Crypt in Camberwell where she sketches the musicians live. Paintings and drawings will be on display while she works on her latest painting.

www.paintingshadows.co.uk

hamleyjenkins hamleyjenkins



DANIEL CRAWSHAW

FINE ART

STUDIO 9E1, BUSSEY ALLEY, COPELAND PARK

FRIDAY 6–9PM • SATURDAY & SUNDAY 11AM–6PM

Daniel's evocative and engaging paintings are derived from his experiences of remote mountains. Gathering photographic source material on site, he creates studio works of varying scale. Often almost hyperreal, his landscapes resonate with a sense of place with subjects ranging from his native Wales to Europe, Canada and Australia.

www.artwales.com
 [daniel.crawshaw1](https://www.instagram.com/daniel.crawshaw1) |  [daniel.crawshaw.33](https://www.facebook.com/daniel.crawshaw.33)

6


JACOB ALEXANDER CABINET MAKERS

HOMEWARES / INTERIORS

UNIT 2C, COPELAND PARK SE15 3SN

SATURDAY & SUNDAY 11AM–6PM

Jacob Alexander create bespoke handcrafted kitchens and furniture. Operating from their office and workshop in Peckham, they are a small diverse team dedicated to producing exceptional quality cabinetry, innovative finishes and lasting design. Whether using raw natural materials or refined factory-applied finishes, employing quintessential styles or introducing new uncommon combinations – they encourage a dynamic interaction of materials, disciplines, technology and craft.

www.jacob-alexander.co.uk
 [jacobalexanderstudio](https://www.instagram.com/jacobalexanderstudio) |  [jacobalexanderstudio](https://www.facebook.com/jacobalexanderstudio)

6


CRISTINA MUFER

DRAWING / ILLUSTRATION

DG STUDIOS (GROUND FLOOR) BUSSEY BUILDING

FRIDAY 6–9PM • SATURDAY & SUNDAY 11AM–6PM

Cristina shows a whole universe of 'costumbristas' illustrations, marked by a remarkable surrealism. All her works, with the common denominator of a palette of warm colours, will catch the viewer in this oneiric experience.

www.cristinamufer.com
 [cristinamufer](https://www.instagram.com/cristinamufer) |  [cristinamufer](https://www.facebook.com/cristinamufer)

6


CATNAP DESIGN LONDON

CERAMICS

DG STUDIOS (GROUND FLOOR) BUSSEY BUILDING

FRIDAY 6–9PM • SATURDAY & SUNDAY 11AM–6PM

Luxury affordable illustrated plates, bowls and homeware (with added cats). Catnap's illustrated ceramics range is designed in South East London by a local illustrator and produced in the UK on fine bone china.

www.catnapdesign.com
 [catnapdesign.ldn](https://www.instagram.com/catnapdesign.ldn) |  [catnapdesign](https://www.facebook.com/catnapdesign)

6



EMILY FRANCES HODGES

FINE ART / MIXED MEDIA

DG STUDIOS (GROUND FLOOR) BUSSEY BUILDING

FRIDAY 6–9PM • SUNDAY 11AM–6PM

Emily will be exhibiting her guerilla art project to talk about the environment and inspire people to act and change their daily habits.

www.emilyfranceshodges.wordpress.com

[emily_frances_hodges](#) [emilyfranceshodges](#)

FLOCK

MIXED MEDIA

DG STUDIOS (GROUND FLOOR) BUSSEY BUILDING

FRIDAY 6–9PM • SATURDAY & SUNDAY 11AM–6PM

Flock is a Peckham based edit of ethical artists and designers that provides a platform for local independent brands. With Peckham being a hotbed of creativity and art in South London, their main aim is to offer local entrepreneurs and brands a curated retail store to showcase their work, and to create a network of support for local designers. Flock is an eclectic mix of prints, cards, jewellery, ceramics, accessories, swimwear and clothing.

www.flocklondon.co.uk

[flocklondon_](#) [flocklondon_](#) [flocklondon18](#)



LUCIA FRASER

FINE ART

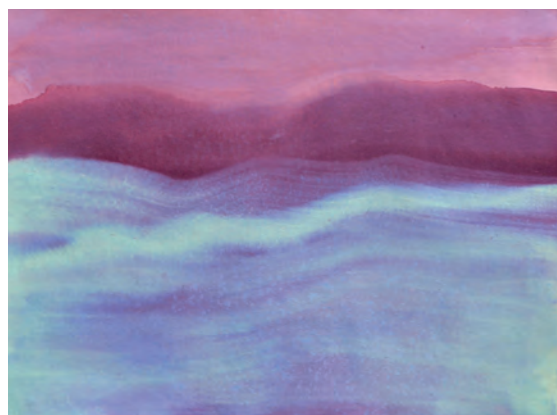
DG STUDIOS (GROUND FLOOR) BUSSEY BUILDING

FRIDAY 6–9PM • SATURDAY & SUNDAY 11AM–6PM

Lucia Fraser is a multidisciplinary artist specialising in painting and ceramics. Finding inspiration from the natural world she creates work that is gestural and expressive. Her recognisable mark making transfers from canvas to ceramic in a fluid painterly style.

www.luciafraser.com

[luciafraser](#) [luciafraserart](#)



SARA CARLYLE

MIXED MEDIA

DG STUDIOS (GROUND FLOOR) BUSSEY BUILDING

FRIDAY 6–9PM • SATURDAY & SUNDAY 11AM–6PM

Sara Carlyle is a Video Artist based in South London. Her work focuses on short films which combine art, fashion and moving image. Carefully observing human experience in relation to objects, garments and environments, while focussing on colour and perspectives to create cinematic and sometimes abstract footage. Stills from moving image projects are often recycled into different mediums of print, including textiles and large scale solutions.

[saracarlylearchive](#) [saracarlyle](#)





▲ KATH DARE

JEWELLERY / SILVERSMITHING
DG STUDIOS (GROUND FLOOR) BUSSEY BUILDING
FRIDAY 6-9PM • SATURDAY & SUNDAY 11AM-6PM

Kath Dare creates timeless charming pieces in silver and gold that are handmade in her studio using traditional techniques. South East London with its beautiful parks and hilly land is a huge inspiration, from park pathways that are featured on lockets to rings made from twigs from Peckham Rye Park.

www.kathdarejewellery.com



kathdarejewellery



▲ DIRK LARSEN

SCULPTURE
DG STUDIOS (GROUND FLOOR) BUSSEY BUILDING
FRIDAY 6-9PM • SATURDAY & SUNDAY 11AM-6PM

Bas-reliefs and small wall sculptures.

www.dirklarsen.com



dirklarsen



dirk.larsen



▲ ROZ EDENBROW

PRINTMAKING
DG STUDIOS (GROUND FLOOR) BUSSEY BUILDING
FRIDAY 6-9PM • SATURDAY & SUNDAY 11AM-6PM

Monoprints and screenprints inspired by the colours, lines and silhouettes of plants and flowers. Halftone photographs combined with bold gestural brushstrokes, she uses layering to create contrast between the blossoming flowers and harder flatter daubs.

www.redenbrow.com



rossie_edenbrow

CHRISTOPHE POINTREAU ►►

CERAMICS
DG STUDIOS (GROUND FLOOR) BUSSEY BUILDING
SATURDAY & SUNDAY 11AM-6PM

Christophe produces a wide variety of work in form and style from wheel-thrown porcelain pieces to hand-built animal figures which are then raku fired.



christophe_p_ldn



PECKHAM SOUL ▶▶

VINYL / CLOTHING
STUDIO BGB, BG STUDIOS (GROUND FLOOR)
BUSSEY BUILDING
FRIDAY 6–9PM • SATURDAY & SUNDAY 11AM–6PM

6

The UK's most diverse postcode, Peckham Soul explores the creative energy of diversity and through their designs, reject the negativity surrounding difference, asserting proudly that difference is the spark of debate and engagement which makes the world better for all. And for vinyl lovers, check out their Bussey Building Record shop specializing in cult and collectable vinyl.

www.peckhamsoul.co.uk

 peckhamsoul  peckhamsoul  peckhamsoul



VINYL & CLOTHING

MADE IN PECKHAM

ROADS2JOYA ▶▶

HOMEWARES / INTERIORS

STUDIO DGFI&2 (GROUND FLOOR) BUSSEY BUILDING

SATURDAY & SUNDAY 11AM-6PM

Roads2Joya is a small artisanal upholstery and soft furnishing business. They will be showcasing a selection of chairs and soft furnishings, plus handmade lifestyle products.

www.roads2joya.com

 roads2joya

6



◀◀ ZOE RAFAH

MIXED MEDIA / PAINTING / PHOTOGRAPHY

THEATRE PECKHAM

221 HAVIL STREET, CAMBERWELL SE5 7SD

FRIDAY 6-9PM • SATURDAY & SUNDAY 11AM-6PM

Zoe's work is a study and celebration of the black woman. The project features large scale oil and mixed media paint work, influenced by gold, which are significant of the soil and rivers of the African motherland where black people originated from.

In terms of style, the project looks at the exploration of portraiture, the skills and techniques involved in mixing contemporary styles with some traditional techniques.

 heavenly_portraits_by_zoe

7

THEATRE
PECKHAM

JOIN OUR ACADEMY

Inspiring Creativity & Ambition. The future is here. Ages 3 - 25



theatrepeckham.co.uk | 020 7708 5401

MADE IN PECKHAM • OPEN STUDIOS



8 SAGE FLOWERS

FLORAL STUDIO
SAGE FLOWERS 232 RYE LANE SE15 4NL
FRIDAY 6–9PM • SATURDAY & SUNDAY 11AM–6PM

Peckham floral studio SAGE Flowers garner their inspiration from a wide array of art and design. They invite you into their shop to view the work of ceramicist, Bisila Noah.

www.sageflowers.co.uk

 [sage.flowers](https://www.instagram.com/sage.flowers)

8 BISILA NOHA

CERAMICS
SAGE FLOWERS 232 RYE LANE SE15 4NL
FRIDAY 6–9PM • SATURDAY & SUNDAY 11AM–6PM

Strongly influenced by Japanese ceramics and Sumi-e painting, Bisila makes ‘simple’ ceramic pieces she uses as a canvas for abstract landscapes. Having been heavily constrained by societal ideas of productivity and functionality, her first pots were a metaphor of us, human beings, becoming ‘human doers’. Her latest collection, BRUMAS (Haze) was born from a desire to take a step back to leave the ‘doing’ behind and embrace the ‘being’.

www.bisilanoha.co.uk

 [bisilanoha](https://www.instagram.com/bisilanoha)



9 PHIL POLGLAZE

PHOTOGRAPHY
2 GIRLS' CAFE, 24A PECKHAM RYE SE15 4JR
FRIDAY 6–9PM • SATURDAY & SUNDAY 11AM–6PM

One Hundred Heads. Renowned local photographer Phil Polglaze shows photographs taken between 26th January and 23rd March 2019 of people who happened to be in 2 Girls' Café at the time.



10 RUTH FRASER

DRAWING / ILLUSTRATION
RYE LANE BAPTIST CHURCH, 59A RYE LANE SE15 5EX
FRIDAY 6–9PM • SATURDAY 11AM–6PM

Rooted in the two great loves of her life, Ruth's blend of pencil, charcoal and oil pastel captures the technical intricacies of the body's skeletal system and the world of musical instruments in a unique collection of thematic pieces. Her background in nursing and music shines through her work.

 [blessed.ruth](https://www.instagram.com/blessed.ruth)  [blessed.ruth](https://www.facebook.com/blessed.ruth)

SOCIAL

@copelandsocial
copelandsocial.com

Coffee Fresh Pastries Craft Beer 241 on cocktails Wed-Thu 6-7pm



send
noods

London's first vegan Sichuan pop-up, Send Noods is back in Peckham for a residency at Social.

All 100% plant-based.
Book your table now.

Copeland Park
133 Rye Lane

Roof D
Bussey Building

Rye Society

Craft beer, cocktails, live music, vegan burgers

DRINKS,
FOOD &
ROOF VIBES

RyeSocietySE15
ryesociety.co.uk





CREATIVE



FILM



GALLERIES



EVENTS



FITNESS



FOOD/DRINK



COMMUNITY



SHOPPING